

FIG. 1

BEST AVAILABLE COPY

Light Chain

	Framework 1	Framework 2	Framework 3	Framework 4
V10	DIVMSQSPDSLAVSLGERVTLNC	WYQQKPGQSPKLLIY	GVPDRFSGSGGTDFLTITISSVQAEDVAVYYC	FGAGTKLELK
V35	---T---	---A-I---	---I---	---I---
V37	---T---	---P---	---I---	---Q---I---

Heavy Chain

	Framework 1	Framework 2	Framework 3	Framework 4
V10	QVQLVQSGAEVVKPGASVKISCKASGYTFT	WVKQNPQORLEWIG	KATLTADTSASTAYVELSSLRSEDTAVYFCTR	WGQGTLVTVSS
V40	---V---	---R---	---M---	---
V41	---K---	---R-A---	---M---	---Q---

FIG. 2

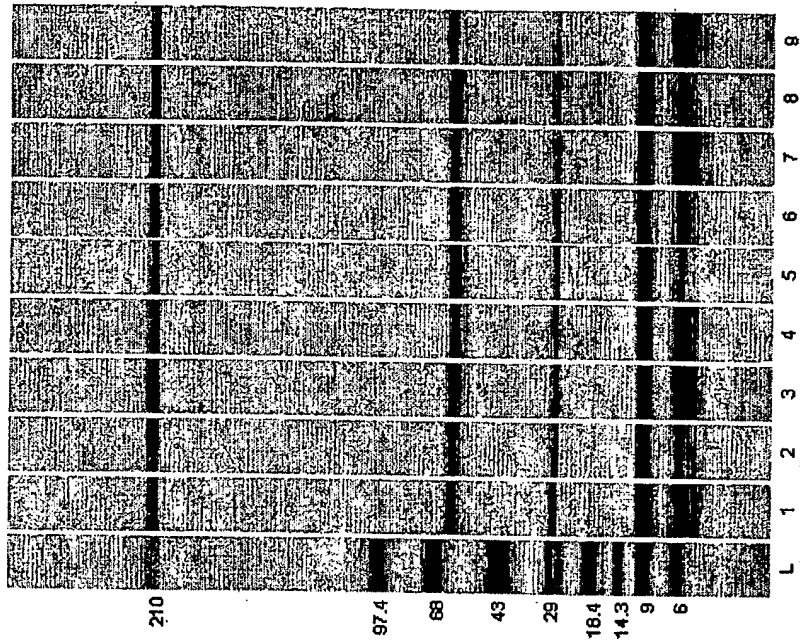


FIG. 3

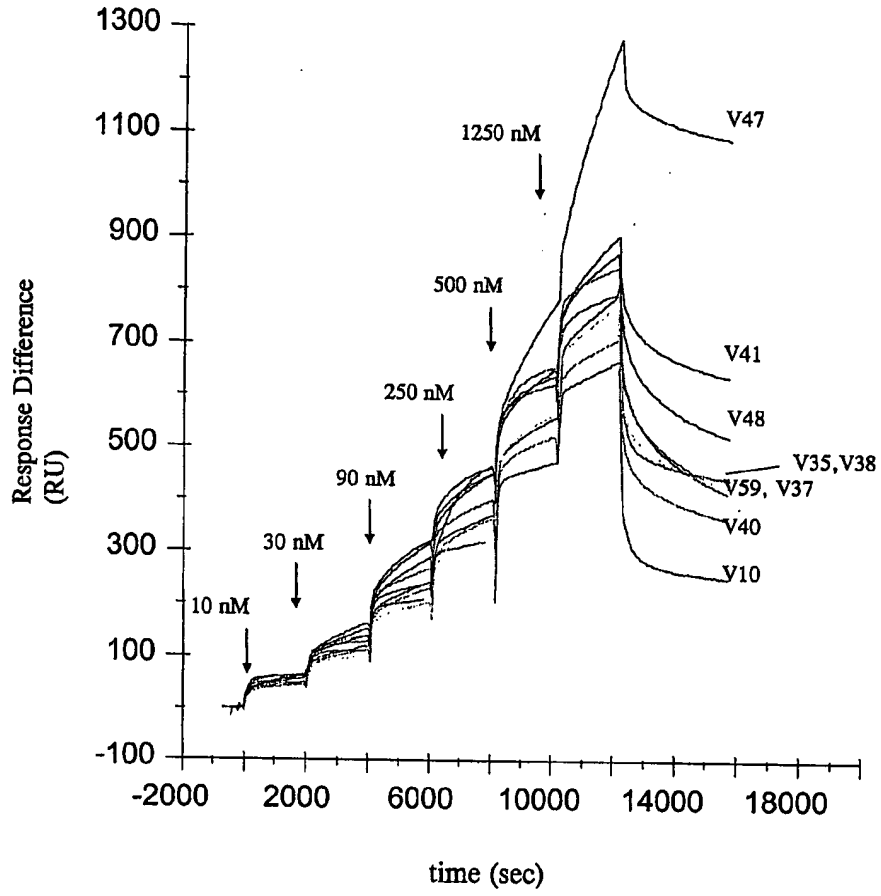


FIG. 4

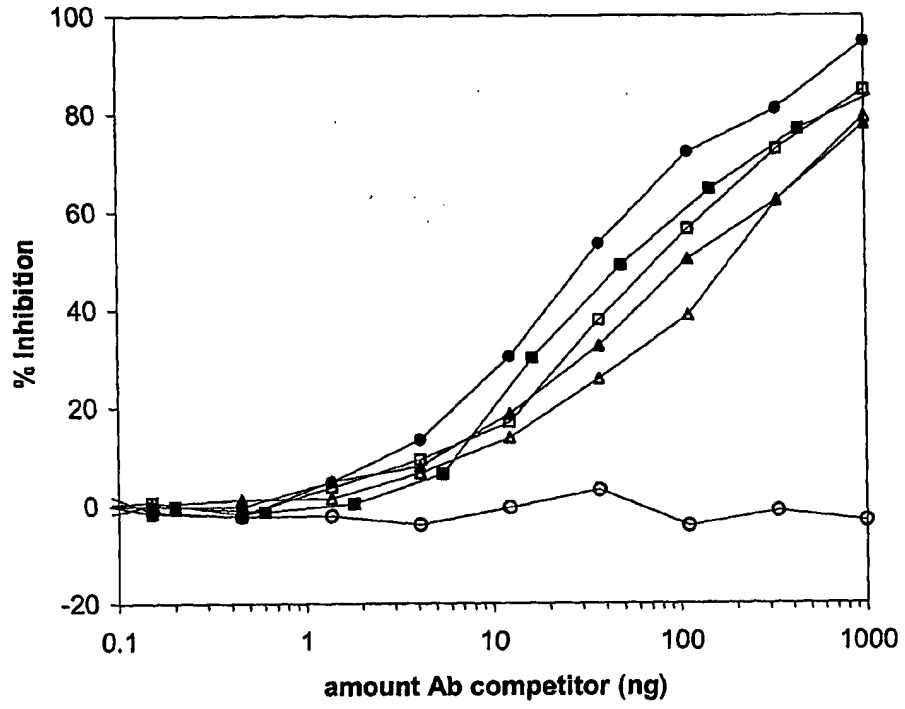


FIG. 5

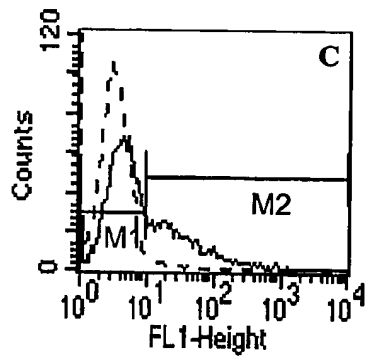
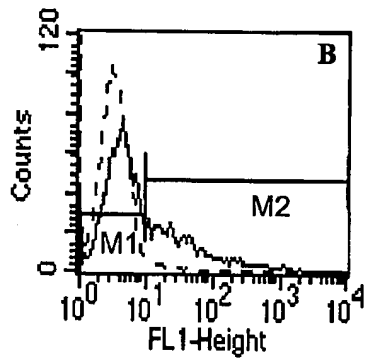
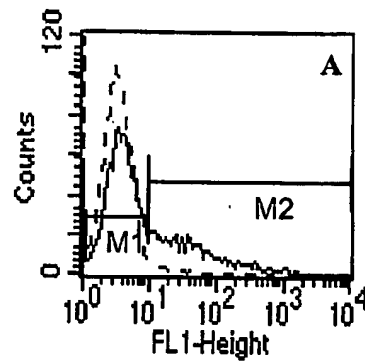


FIG. 6

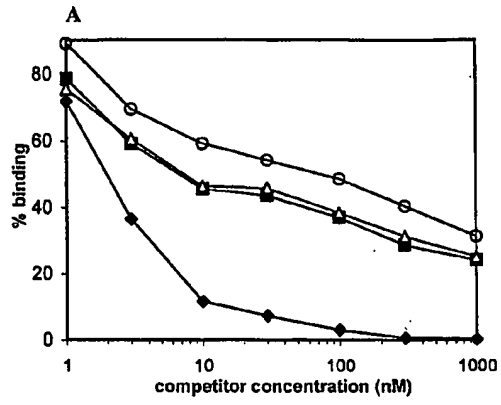


FIG. 7

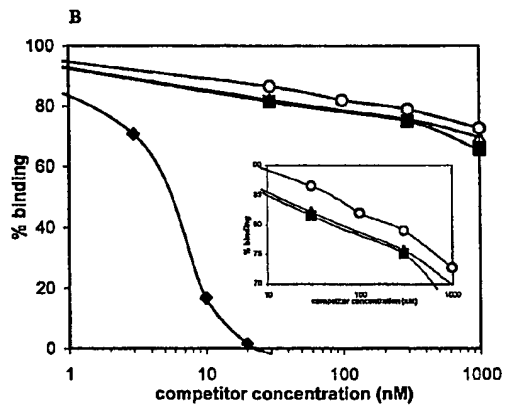


FIG. 8

Light chain	
CDR1 CC49/HuCC49 LEN	24 Lys 25 Ser 26 Ser 27 Gln 28 Ser 29 Gln 30 Lys 31 Asn 32 Tyr 33 Leu 34 Ala
CDR2 CC49/HuCC49 LEN	50 Trp 51 Ala 52 Ser 53 Ala 54 Arg 55 Gln 56 Ser
CDR3 CC49/HuCC49 LEN	88 Gln 89 Gln 90 Gln 91 Tyr 92 Tyr 93 Ser 94 Thr 95 Pro 96 Leu 97 Thr
Heavy chain	
CDR1 CC49/HuCC49 21/28'CL	31 Asp 32 His 33 Ala 34 Ile 35 Met 36 His
CDR2 CC49/HuCC49 21/28'CL	50 Tyr 51 Phe 52 Ser 53 Ile 54 Asn 55 Ala 56 Tyr 57 Phe 58 Lys 59 Tyr 60 Asn 61 Gln 62 Arg 63 Phe 64 Lys 65 Gly
CDR3 CC49/HuCC49 21/28'CL	95 Ser 96 Leu 97 Asn 98 Met 99 Ala 100 Ser 101 Tyr 102 Asn

LIGHT

A.

	Fwk1	CDR1	Fwk2
	***** * * * * *		**** * * * * *
mCC49	DIVMSQSPSSLPVSVGEKVTLS	KSSQSLLYSGNQKNYLA	WYQQKPGQSPKLLIY
LEN	DIVMTQSPDSLAVSLGERATINC		WYQQKPGQPPKLLIY
HuCC49	DIVMSQSPDSLAVSLGERVTLNC	KSSQSLLYSGNQKNYLA	WYQQKPGQSPKLLIY

	CDR2	Fwk3	CDR3	Fwk4
	* * * *	* * * * * * * * * *		* * * * *
mCC49	WASARES	GVPDRFTGSGSGTDFTLT	QYYYSYPLT	FGAGTKLVLK
LEN		GVPDRFSGSGSGTDFTLT		FGQGTKLEIK
HuCC49	WASARES	GVPDRFSGSGSGTDFTLT	QYYYSYPLT	FGAGTKLELK

HEAVY

B.

	Fwk1	CDR1	Fwk2
	** * * * * * * * * * *		***** * * * * *
mCC49	QVQLQQSDAELVKPGASVKISCKASGYTFT	DHAIH	WVKQNPEQGLEWIG
21/28' CL	QVQLVQSGAEVKKPGASVKVSKASGYTFT		WVRQAPGQRLEWIG
HuCC49	QVQLVQSGAEVVKPGASVKISCKASGYTFT	DHAIH	WVKQNPGQRLEWIG

	CDR2	Fwk3
	* * * *	* * * * * * * * * *
mCC49	YFSPGNDDFKYNERFKG	KATLTADKSSSTAYVQLNSLTSEDSAVYFCTR
21/28' CL		RVTITRDTASTAYMELSSLRSEDTAVYYCAR
HuCC49	YFSPGNDDFKYNERFKG	KATLTADTSASTAYVELSSLRSEDTAVYFCTR

	CDR3	Fwk4
	* * * *	
mCC49	SLNMAY	WGQGTSLVTVSS
21/28' CL		WGQGTSLVTVSS
HuCC49	SLNMAY	WGQGTSLVTVSS

FIG. 9

**This Page is Inserted by IFW Indexing and Scanning
Operations and is not part of the Official Record**

BEST AVAILABLE IMAGES

Defective images within this document are accurate representations of the original documents submitted by the applicant.

Defects in the images include but are not limited to the items checked:

- BLACK BORDERS
- IMAGE CUT OFF AT TOP, BOTTOM OR SIDES
- FADED TEXT OR DRAWING
- BLURRED OR ILLEGIBLE TEXT OR DRAWING
- ~~SKEWED/SLANTED IMAGES~~
- COLOR OR BLACK AND WHITE PHOTOGRAPHS
- GRAY SCALE DOCUMENTS
- LINES OR MARKS ON ORIGINAL DOCUMENT
- REFERENCE(S) OR EXHIBIT(S) SUBMITTED ARE POOR QUALITY
- OTHER: _____

IMAGES ARE BEST AVAILABLE COPY.

As rescanning these documents will not correct the image problems checked, please do not report these problems to the IFW Image Problem Mailbox.